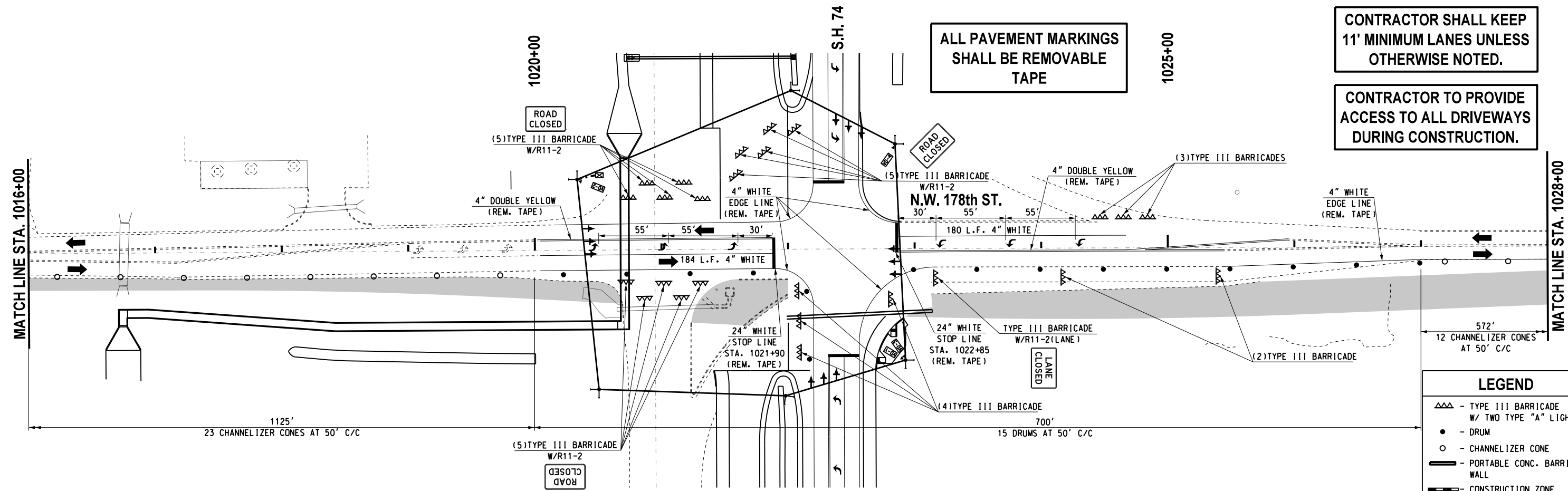
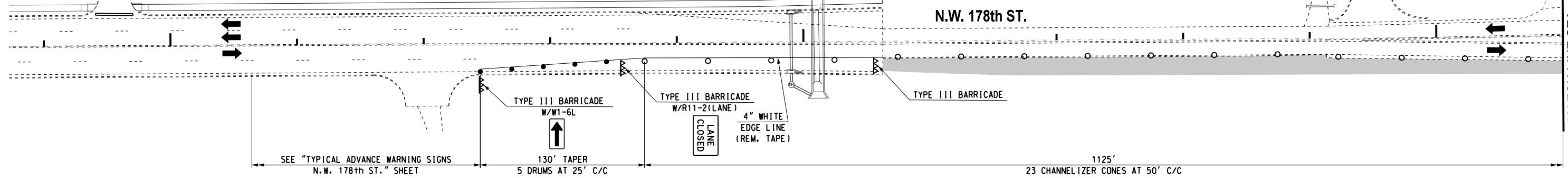
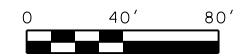


REVISIONS		
NO.	DESCRIPTION	DATE

1005+00

1010+00

1015+00



ALL PAVEMENT MARKINGS SHALL BE REMOVABLE TAPE

CONTRACTOR SHALL KEEP 11' MINIMUM LANES UNLESS OTHERWISE NOTED.

CONTRACTOR TO PROVIDE ACCESS TO ALL DRIVEWAYS DURING CONSTRUCTION.

LEGEND	
	- TYPE III BARRICADE W/ TWO TYPE "A" LIGHTS
	- DRUM
	- CHANNELIZER CONE
	- PORTABLE CONC. BARRIER WALL
	- CONSTRUCTION ZONE IMPACT ATTENUATOR
	- WORK AREA

Design	RWR	08/10/17
Drawn	GDB	08/10/17



**TRAFFIC CONTROL
PHASES 3I (SHEET 1 OF 2)
N.W. 178th ST.**

State Job No. 14964(08) Sheet No. T65

08/10/17 G:\Projects\T-16628 SH 74 @ NW 178th, NW 192nd & NW 206th\CAD\TC PHASE 3I\NW 178th.dgn